

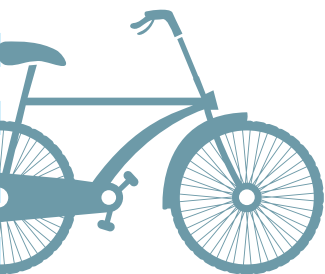


Welcome to Fish Creek Provincial Park

Fish Creek Provincial Park is one of the largest urban parks in North America with more than 1,300 hectares of natural habitat, rich biodiversity and loads of hiking, walking and biking trails to explore.



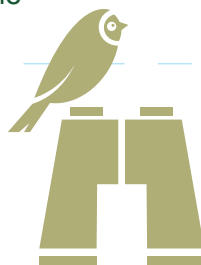
The Friends' office is located in the Cookhouse at the Bow Valley Ranch in Fish Creek Provincial Park.



Visit the Bow Valley Ranch in Fish Creek Provincial Park to stroll through the Artisan Gardens, stop at Annie's Café or enjoy fine dining at the Bow Valley Rancho Restaurant.



Getting involved with the Friends of Fish Creek is a great way to connect with nature, meet new people and stay active. The act of giving back through volunteering can also contribute to a sense of meaning and life purpose.



You'll find an abundance of native plants, spruce forests, grasslands, wetlands and a river valley, as well as plenty of wildlife including deer, porcupines, beaver and hundreds of bird species.

Our Vision is a sustainable Fish Creek Provincial Park that improves the quality of life for present and future generations.

Our Mission is to engage the community through activities and awareness to conserve a truly unique naturalized urban park.

The Friends of Fish Creek offer a diverse suite of inclusive public programs, including hands-on stewardship opportunities designed to engage park users in responsible use and care of the environment

Drop into the Bow Valley Ranch Visitor Centre to find out more about the park's history.

www.fish-creek.org



Friends of Fish Creek



Provincial Park Society

www.friendsoffishcreek.org

Become a member

Friends of Fish Creek Members receive free admission to Fish Creek Speaker Series presentations, discounts at select local businesses, updates on park events, course discounts and the *Voice of the Friends* newsletter.

Become a Park Protector

You can help keep Fish Creek Provincial Park in good shape with a small monthly donation from a credit card. Automatic donations keep administrative costs down so more of your donation will go to support programs, courses and events. As a Park Protector, you'll get special invitations, monthly updates and a valuable tax receipt.

For more information about the Park Protector Program, contact the Friends of Fish Creek or visit friendsoffishcreek.org/park-protector-signup/

Want to learn what's happening in Fish Creek?

www.friendsoffishcreek.org
403-238-3841

Our office is open

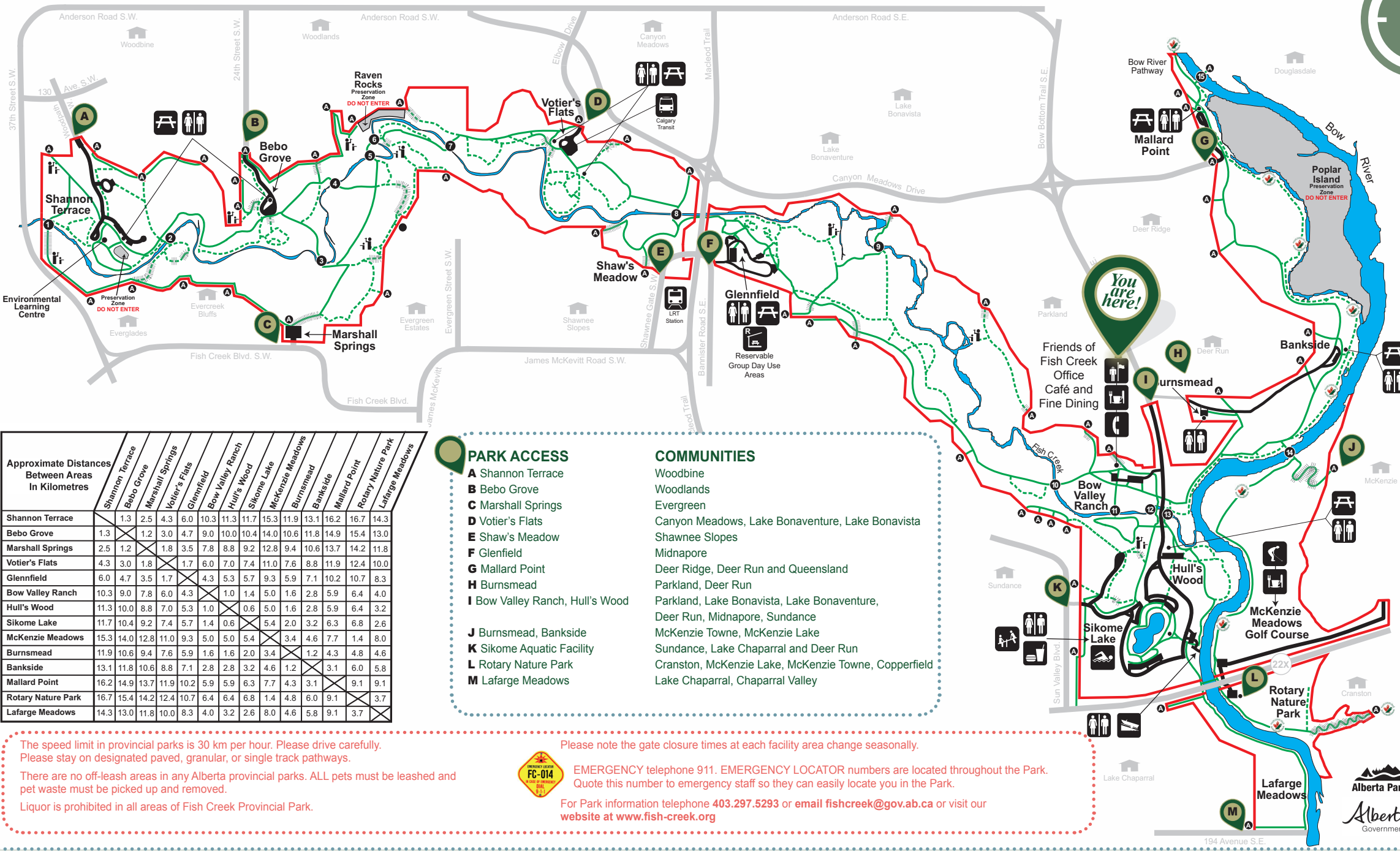
Monday—Friday

9:00 am—5:00 pm

Please call before coming down



Welcome to Fish Creek Provincial Park



Approximate Distances Between Areas In Kilometres	Shannon Terrace	Bebo Grove	Marshall Springs	Votier's Flats	Glennfield	Bow Valley Ranch	Hull's Wood	Sikome Lake	McKenzie Meadows	Burnsmead	Bankside	Mallard Point	Rotary Nature Park	Lafarge Meadows
Shannon Terrace		1.3	2.5	4.3	6.0	10.3	11.3	11.7	15.3	11.9	13.1	16.2	16.7	14.3
Bebo Grove	1.3		1.2	3.0	4.7	9.0	10.0	10.4	10.6	11.8	14.9	15.4	13.0	
Marshall Springs	2.5	1.2		1.8	3.5	7.8	8.8	9.2	12.8	9.4	10.6	13.7	14.2	11.8
Votier's Flats	4.3	3.0	1.8		1.7	6.0	7.0	7.4	11.0	7.6	8.8	11.9	12.4	10.0
Glennfield	6.0	4.7	3.5	1.7		4.3	5.3	5.7	9.3	5.9	7.1	10.2	10.7	8.3
Bow Valley Ranch	10.3	9.0	7.8	6.0	4.3		1.0	1.4	5.0	1.6	2.8	5.9	6.4	4.0
Hull's Wood	11.3	10.0	8.8	7.0	5.3	1.0		0.6	5.0	1.6	2.8	5.9	6.4	3.2
Sikome Lake	11.7	10.4	9.2	7.4	5.7	1.4	0.6		5.4	2.0	3.2	6.3	6.8	2.6
McKenzie Meadows	15.3	14.0	12.8	11.0	9.3	5.0	5.0	5.4		3.4	4.6	7.7	1.4	8.0
Burnsmead	11.9	10.6	9.4	7.6	5.9	1.6	1.6	2.0	3.4		1.2	4.3	4.8	4.6
Bankside	13.1	11.8	10.6	8.8	7.1	2.8	2.8	3.2	4.6	1.2		3.1	6.0	5.8
Mallard Point	16.2	14.9	13.7	11.9	10.2	5.9	5.9	6.3	7.7	4.3	3.1		9.1	9.1
Rotary Nature Park	16.7	15.4	14.2	12.4	10.7	6.4	6.4	6.8	1.4	4.8	6.0	9.1		3.7
Lafarge Meadows	14.3	13.0	11.8	10.0	8.3	4.0	3.2	2.6	8.0	4.6	5.8	9.1	3.7	

PARK ACCESS

- A Shannon Terrace
- B Bebo Grove
- C Marshall Springs
- D Votier's Flats
- E Shaw's Meadow
- F Glennfield
- G Mallard Point
- H Burnsmead
- I Bow Valley Ranch, Hull's Wood
- J Burnsmead, Bankside
- K Sikome Aquatic Facility
- L Rotary Nature Park
- M Lafarge Meadows

COMMUNITIES

- Woodbine
- Woodlands
- Evergreen
- Canyon Meadows, Lake Bonaventure, Lake Bonavista
- Shawnee Slopes
- Midnapore
- Deer Ridge, Deer Run and Queensland
- Parkland, Deer Run
- Parkland, Lake Bonavista, Lake Bonaventure, Deer Run, Midnapore, Sundance
- McKenzie Towne, McKenzie Lake
- Sundance, Lake Chaparral and Deer Run
- Cranston, McKenzie Lake, McKenzie Towne, Copperfield
- Lake Chaparral, Chaparral Valley

The speed limit in provincial parks is 30 km per hour. Please drive carefully. Please stay on designated paved, granular, or single track pathways.

There are no off-leash areas in any Alberta provincial parks. ALL pets must be leashed and pet waste must be picked up and removed.

Liquor is prohibited in all areas of Fish Creek Provincial Park.

Please note the gate closure times at each facility area change seasonally.



EMERGENCY telephone 911. EMERGENCY LOCATOR numbers are located throughout the Park. Quote this number to emergency staff so they can easily locate you in the Park.

For Park information telephone 403.297.5293 or email fishcreek@gov.ab.ca or visit our website at www.fish-creek.org

Legend

- Park Office
- Viewpoint
- Telephone
- Restaurant
- Concession
- Playground
- Washrooms & Drinking Water
- Swimming
- Boat Launch
- Golf
- LRT Station
- Picnic Shelter
- Picnic Area
- Trans Canada Trail
- Residential Community
- Trail Access
- Bridge Number
- Steep Hill
- Park Roadway
- Paved Path
- Granular Pathways
- Park Boundary

