

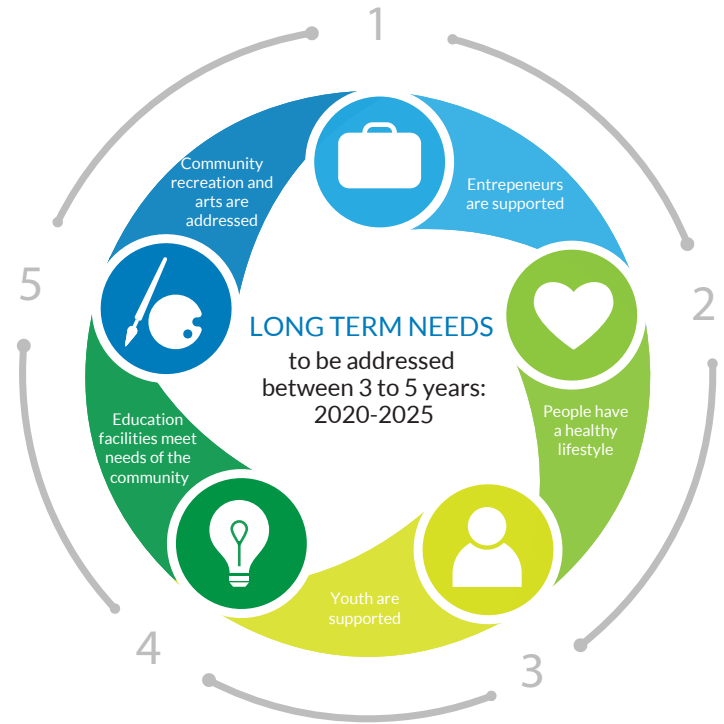
**A COMMUNITY REFLECTION:** *What we learned from the needs assessment study*

**SHORT TERM NEEDS**

to be addressed between 1 and 3 years:  
2017-2020



**LONG TERM NEEDS**



The survey design was based on the Wood Buffalo Strategic Road Map.

**Who is FuseSocial?**

As a support agency to the social profit sector **FuseSocial's** role is to aid other agencies to not only recover from the effects of the 2016 wildfire but improve the quality of life in the Regional Municipality of Wood Buffalo.

**The role of the social profit (aka Non-profit) sector?**

The social profit sector provides communities with essential services such as health care, education, cultural services and recreational programs.

**What do we do with this information?**

**FuseSocial** presents the results of this study and other survey series to key stakeholders and funders in order for them to understand the needs of the community and address them.

We help other agencies to help the community.

For more information about the studies and survey series completed by **FuseSocial** please visit:  
**www.fusesocial.ca**  
and click on Publications

Thank you to the Alberta Real Estate Foundation for funding this Community Needs Assessment Study on behalf of our community.



TIMELINES FOR 44 GOALS WERE DECIDED AND RANKED BY RESIDENTS

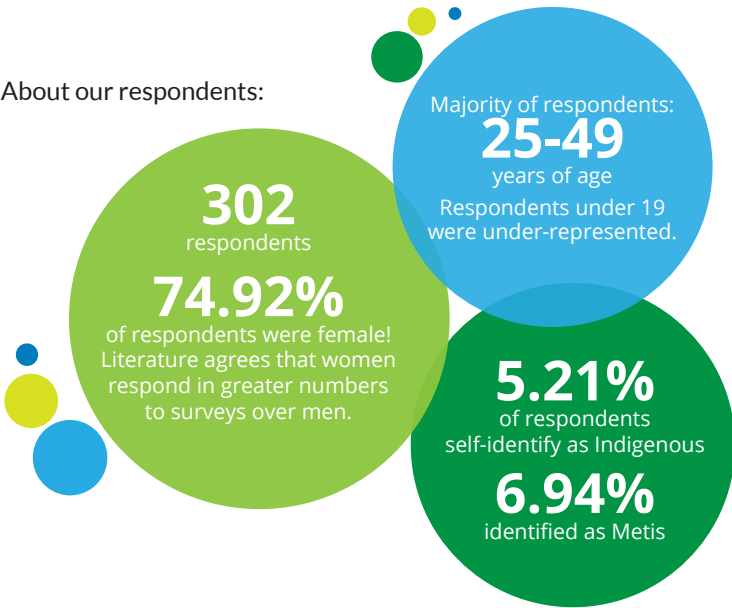


A COMMUNITY REFLECTION: *What we learned from the needs assessment study*

WHY DID WE DO A COMMUNITY NEEDS ASSESSMENT STUDY?

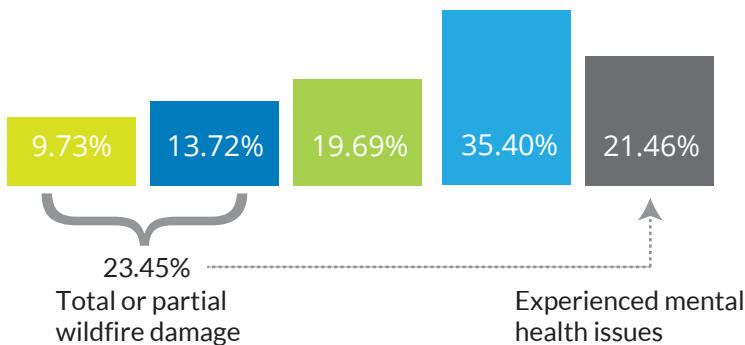
To understand the needs of our residents. This information will support community recovery and aid the social profit sector in prioritizing services.

About our respondents:



IMPACT OF WILDFIRE ON RESPONDENTS

- Home, businesses and vehicles totally destroyed by the wildfire
- Suffered some home damage from the wildfire
- Either lost job or suffered other financial difficulties
- No loss of property in the wildfire
- Experienced mental health issues (depression, anxiety, PTSD, etc.)



IMMEDIATE NEEDS

1. AFFORDABLE LIVING AND HOUSING



Comparative Alberta Spatial Price Index:

Average score	97.3
Edmonton	100
Calgary	101.4
Fort McMurray	114.5
Canmore	119.4

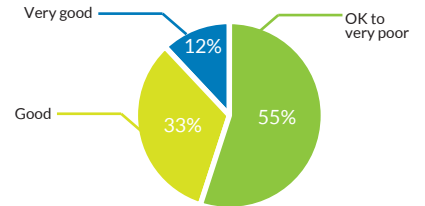
Average price for homes in Fort McMurray 2016: **\$497,396**  
Average price for homes in Canada 2016: \$352,513 (excluding Toronto and Vancouver housing bubbles)

2. LOCAL HEALTH SERVICES ACCESS



Patients are required to travel to either Edmonton or Calgary for some specialist referrals. (500-700km)

Wood Buffalo Labour Scan survey results ranking local health amenities and services April 2017.



3. SUPPORT FOR VULNERABLE PEOPLE

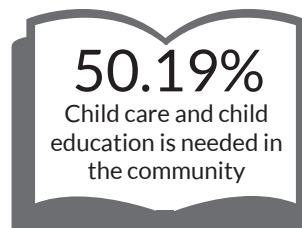
*Including residents affected by the wildfire*



OVER **20,000**\*  
evacuees have reached out for mental health services  
\*Source: CBC

**26%**  
of 300 evacuees in University of Laval study were diagnosed with PTSD

4. NEED FOR CHILD CARE & EDUCATION



April 2017, Wood Buffalo Labour Scan indicated that "there is a local shortage of those holding Bachelor of Social Work degrees and Early Childhood Development certification..." The lack of child care services has become a major recruitment challenge across most industries in the region.

TIMELINES FOR 44 GOALS WERE RANKED BY RESIDENTS

NOW

IMMEDIATE NEEDS

1 YEAR